

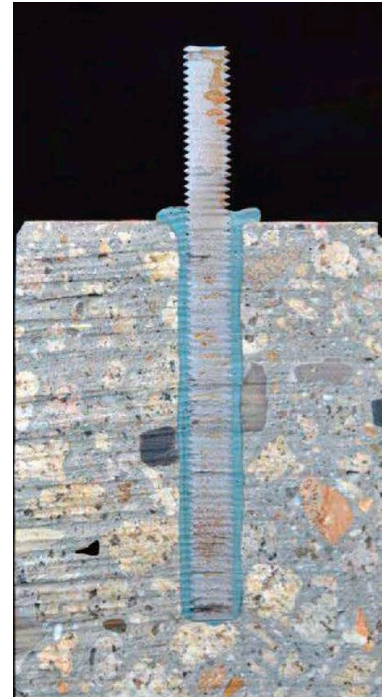
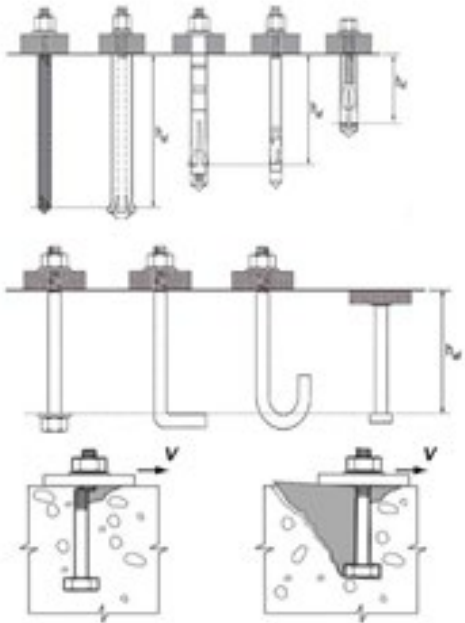


Free Webinars

**Implementing the New AASHTO LRFD
Article 5.13 on Anchoring to Concrete**

**To register for these webinars,
go to pci.org/PCI/Education/Webinars.**

Purpose of the five webinars: Accelerate implementation of the new LRFD section for concrete anchor design and minimize overlap of state highway agencies' implementation efforts through the use of a "deployment kit" for nationwide implementation.



General Topic Outline

- Scope and objectives of webinar
- Determination of design loads (LRFD)
- Anchor behavior
- Code anchor design
- Code design equations
- Product qualification
- ESR information
- Anchorage calculations and selection
- Procurement
- Construction inspection certification
- Compliance testing

Knapsack/Flash Drive/Thumb Drive/Jumpstick Material

- Completion of webinar includes Agency Implementation Plan and a toolkit with the following documents
- All presentation materials and speaker notes
- CRSI Notes to designers
- Sketches showing typical call-out information
- List of videos from Hilti – proper installation of adhesive anchors
- Technical paper(s) on installation of adhesive anchors
- Sample Evaluation Service Reports (ESRs)
 - Details on how to locate anchor qualification materials on ICC-ES website
 - Sample Evaluation Service Reports (ESRs)
- Bridge Design Manual (BDM) Notes
- LRFD and ACI Code flow charts with reference manuals
- Draft of Special Provisions Specification for Concrete Anchors (11-8-2019)
- Tools and checklists for verifying each delivery with manufacturer certifications
- Personnel competencies for jobsite
 - Record keeping
 - Proof testing

Webinar Number	Detailed Topics	Time allotment, hours	Number of slides	Total number of slides
Webinar Number 1 (total 90 minutes plus Q/A)				
1a	Scope & objectives	0.25	14	58
1b	LRFD loads	0.25	8	
1c	Anchorage behavior	1.00	36	
Webinar Number 2 (total 75 minutes plus Q/A)				
2	Code anchor design	1.25	70	70
Webinar Number 3 (total 90 minutes plus Q/A)				
3b	Product qualification	1.00	53	79
3c	ESR information	0.50	26	
Webinar Number 4(total 90 minutes plus Q/A)				
4a	Calculations, selection	0.50	28	53
4b	Procurement	1.00	25	
Webinar Number 5 (total 90 minutes plus Q/A)				
5a	Construction/inspection	1.00	50	83
5b	Compliance inspection & testing	0.50	33	
		8.25		343

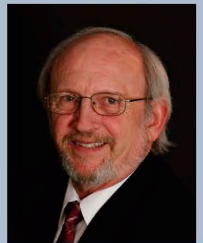
Schedule of the five-part webinar series hosted by PCI:

Webinar	Topics	Date	Time (Eastern)
Anchor 1: Scope	Scope and objectives, LRFD loads, and anchorage behavior	Tuesday, July 7, 2020	2:00 p.m. – 4:00 p.m.
Anchor 2: Design	Code anchor design	Thursday, July 9, 2020	2:00 p.m. – 4:00 p.m.
Anchor 3: Product qualifications	Product qualification and ESR information	Tuesday, July 14, 2020	2:00 p.m. – 4:00 p.m.
Anchor 4: Selection and procurement	Calculations, selection, and procurement	Thursday, July 16, 2020	3:00 p.m. – 5:00 p.m.
Anchor 5: Inspection and compliance	Construction/inspection and compliance inspection and testing	Tuesday, July 21, 2020	3:00 p.m. – 5:00 p.m.

A team of experts assembled by PCI,



Don Meinheit,



Ron Cook, and



Neal Anderson,

will deliver five webinars to the bridge community that address how an agency may elect to implement the findings of National Cooperative Highway Research Program (NCHRP) Reports 639 and 757, which were codified.

This material is disseminated under the sponsorship of NCHRP in the interest of information exchange under contract number NCHRP 20-44(04) with the Precast/Prestressed Concrete Institute (PCI). PCI and NCHRP assume no liability for the use of the information. PCI and NCHRP do not endorse products or manufacturers. Trademarks or manufacturers' names appear in this material only because they are considered essential to the objective of the material. They are included for informational purposes only and are not intended to reflect a preference, approval, or endorsement of any one product or entity.



If you need any further information please contact:

William Nickas at wnickas@pci.org or Phone: (312) 583-6776

or

Edward Harrigan, Ph.D., Senior Program Officer

Transportation Research Board/National Cooperative Highway Research Program & TRB/FHWA Research Support

Email: eharriga@nas.edu Phone: (540) 454-2149

A special THANK YOU to Idaho DOT and Texas DOT for hosting the two pilots of this program.

PCI would like to also thank the TRB Panel members:

Ahmad Abu-Hawash(Panel Chair), Jeffrey Milton, Justin Ocel , Steven Nolan and Mary Lou Ralls Newman